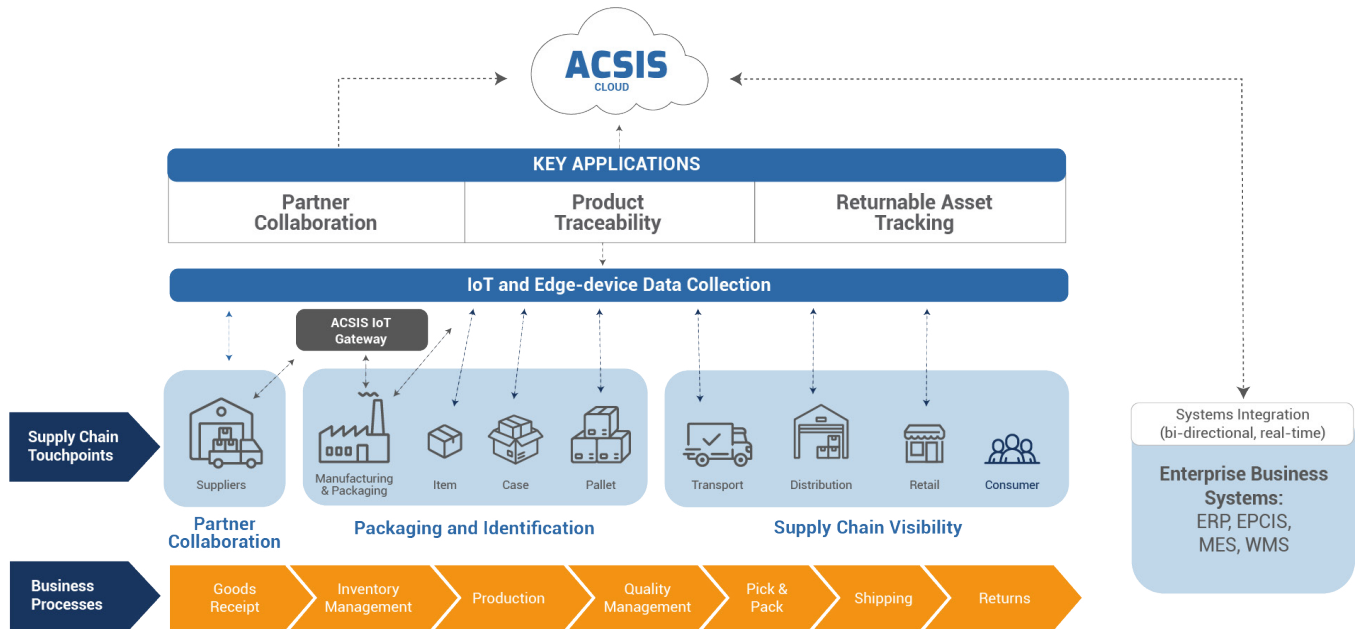


DIGITALLY DRIVEN SUPPLY CHAIN EXECUTION SYSTEMS

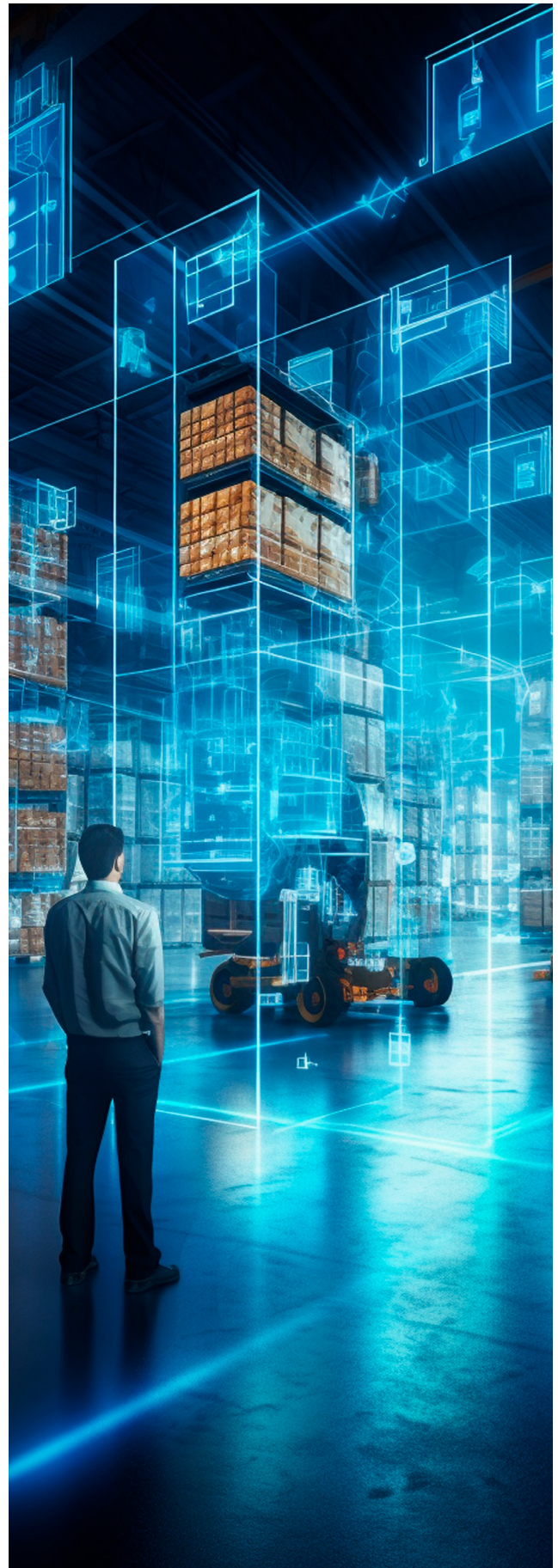
Modern enterprises need more than just supply chain automation - they need intelligence, agility, and collaboration at every stage. ACSIS, part of Antares Vision Group, empowers supply chain leaders with a digital supply chain execution system powered by IoT, AI, and cloud computing to monitor and optimize the movement of products and assets across the supply chain.



The ACSIS Supply Chain Platform is the foundation for end-to-end execution

- / Real-time, data capture across production, warehousing, and distribution operations
- / Integration with ERP, MES, WMS, and serialization (EPCIS) systems for synchronized operations
- / End-to-end traceability for both serialized and non-serialized products
- / Digital collaboration with suppliers, manufacturers, and logistics partners
- / Intelligent tracking and management of returnable transport items (RTIs)
- / Continuous cold chain monitoring with real-time alerting and compliance
- / Orchestrated warehouse execution to ensure order accuracy and operational efficiency

By connecting every operation and asset in the supply chain, the ACSIS Supply Chain Platform transforms fragmented operations into a unified, intelligent network.



ACSIS Supply Chain Platform Modular Solutions

Data Collection & Digitalization

What It Does?

Automates the capture and use of real-time data across the supply chain using barcode, RFID, and IoT devices - enabling precise inventory control, temperature compliance, and operational accuracy at every touchpoint.

Benefits

- Provides a foundation for the perfect order for your customers
 - Increases site productivity by 30%
 - Improves order accuracy and reduces chargebacks
 - Minimizes risk of product spoilage or compliance failures
 - Reduces manual processes and errors by up to 40%
 - Enhances inventory traceability, visibility, and regulatory compliance
 - Achieves 99.9% order accuracy and ensures 24/7 operational integrity –even during ERP downtime
 - Supports centralized monitoring across global operations
-

Capabilities Include

- **Warehouse Execution Systems**
Coordinates and streamlines warehouse operations using barcode, RFID, and machine vision for both serialized and non-serialized products. The solution includes a robust set of serial-aware transactions that automatically adjust an operator's workflow. Serialized items also benefit from item-level tracking, aggregation, and integration with serialization repositories for track and trace requirements.
- **Cold Chain Management**
Ensures compliance with regulations governing the safe manufacture, transportation, delivery, and storage of cold chain products. The system can manage cold chain compliance through the use of time-out-of-refrigeration or real-time temperature sensing devices, providing real status dashboards, and proactive alerts.

Returnable Asset Management

What It Does?

Tracks and manages Returnable Transport Items (RTIs) - such as pallets, totes, and containers - throughout the supply chain using RFID and barcoding.

Benefits

- 20–30% reduction in annual asset replacement costs
- Provides the ability to integrate production to RTI availability
- Enhanced inventory visibility and ensured regulatory compliance
- Prevents asset loss and overstocking
- Enables real-time location and status visibility
- Supports ESG goals through sustainable reuse

Partner Collaboration

What It Does?

Provides a centralized digital platform to manage supplier relationships, streamline communication, and automate processes like PO tracking and labeling.

Benefits

- 60% faster order processing - from days to hours
- 50% reduction in operational costs through automation
- Visibility improvement - know order and partner status instantly
- Faster partner onboarding - scale efficiently without added headcount
- Unifies data across partners and third parties

Why ACSIS?

Trusted by the world's leading companies in life sciences, chemicals, food & beverage, and industrial manufacturing, including Cencora, Bimbo, Cintas, DuPont, Coca-Cola, and Hershey, we help enterprises move from disconnected data points to connected, intelligent execution.

With the ACSIS Supply Chain Platform and its modular execution solutions, companies gain:

- Unified visibility across internal and external operations
- Rapid ROI with modular, scalable deployments
- Future-ready infrastructure for digital traceability and compliance
- Cloud-native platform with deep ERP integration (SAP and others)

Real-World Results:

- A specialty chemical manufacturer cut asset loss by \$700K annually using RTI tracking.
[Read more here.](#)
- A global pharmaceutical packager ensured customer compliance with end-to-end cold chain monitoring.
[Read more here.](#)
- A U.S.-based manufacturer improved shipping accuracy to 99.9% and eliminated mis-shipments, ensuring perfect orders out the door every time.
[Read more here.](#)
- A global chemical manufacturer, gained real-time visibility across a vast network of over 125 global suppliers by implementing our partner collaboration solution - integrating data streams, improving productivity, and enhancing order accuracy across its ecosystem.
[Read more here.](#)
- A leading electronics manufacturer streamlined supplier communication and cut manual processing by automating purchase order tracking and digitizing partner workflows with ACSIS. The result: a 60% reduction in supplier-related errors and enhanced visibility, which enabled faster and more agile production planning.
[Read more here.](#)

Discover how ACSIS can help transform your supply chain.

Visit: acsisinc.com
Email: info@acsisinc.com
Call: (856) 673-3000

